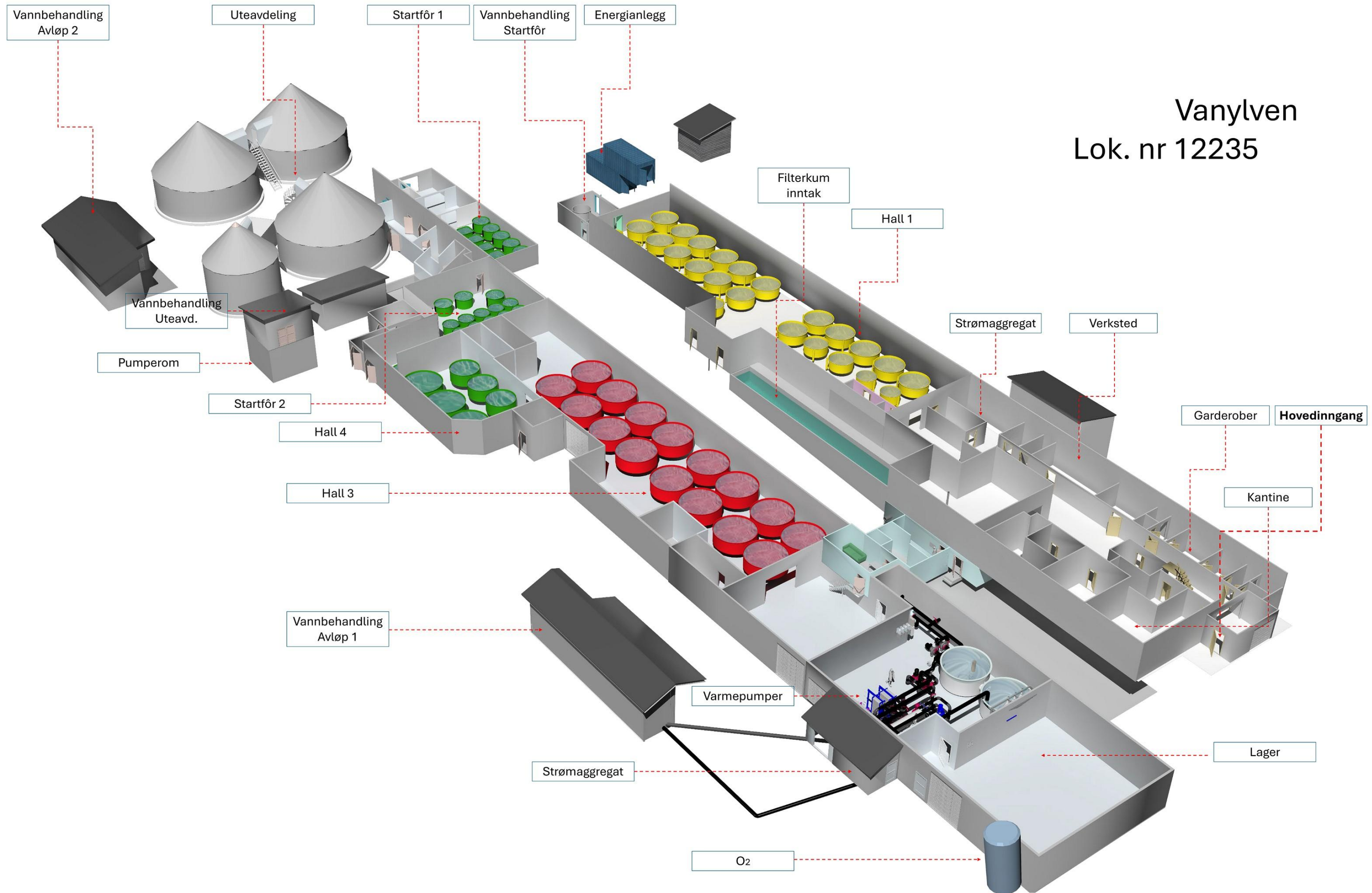
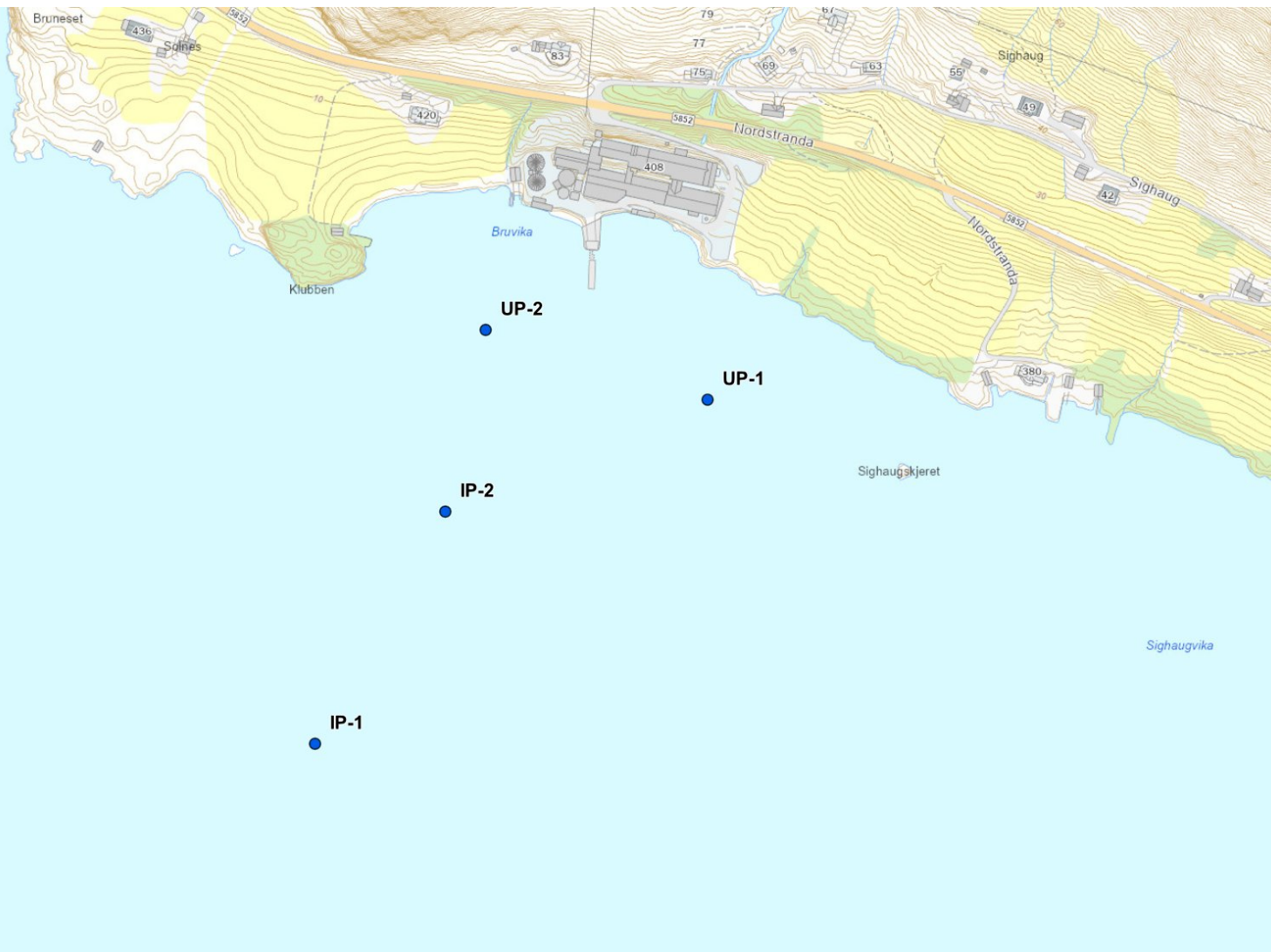


Vanylven Lok. nr 12235





LEGENDE

Midtpunkt

N-62.1031409
Ø-5.4442505

Hovedinntak (IP-1)

Dim. Ø- 710 mm
Dybde 99 m
N-62.0990965
Ø-5.4420446

Backup inntak (IP-2)

Dim. Ø- 315 mm
Dybde 50 m
N-62.1008333
Ø-5.4422833

Avløp 1 (UP-1)

Dim. Ø- 710 mm
Dybde 20 m
N-62.1017792
Ø-5.4455793

Avløp 2 (UP-2)

Dim. Ø- 710 mm
Dybde 20 m
N-62.1020102
Ø-5.4424626